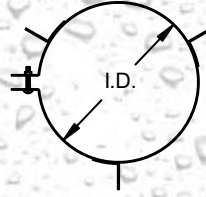


# SINGLE WALL CORR/GUARD

NOTE: Corr/Guard pipe overlaps 2.25" when joined together, therefore assembled length is 2.25" less than listed length.

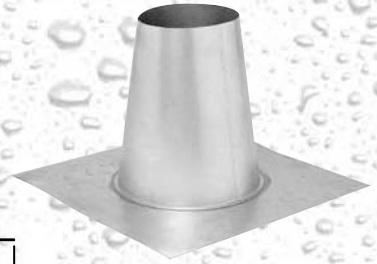
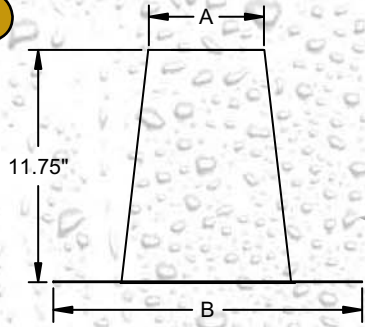
## GUY RING - CGSWGR

I.D.
3.00
4.00
5.00



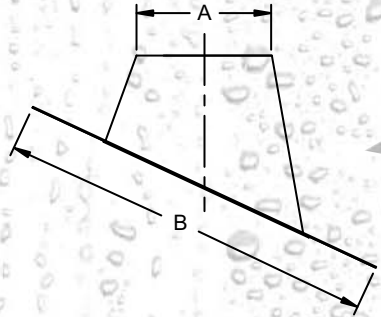
## TALL CONE FLASHING - CGSWFT

A	B
3.50	14.63
4.50	14.63
5.50	19.63



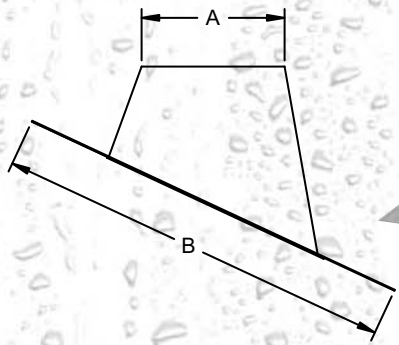
## 6/12 TO 12/12 PITCH FLASHING - CGSWF-12

A	B
3.50	20 x 20
4.50	21 x 28
5.50	21 x 28



## 2/12 TO 5/12 PITCH FLASHING - CGSWF

A	B
3.50	14.63
4.50	14.63
5.50	19.63



## STORM COLLAR - CGSWSC

I.D.
3.00
4.00
5.00

